



The Power of Reciprocal Training

The Basic Orientation Plus (BOP) and BOP Refresher are the most widely accepted reciprocal courses across the nation. They are administered by a national network of local safety councils on behalf of the Association of Reciprocal Safety Councils (ARSC). At the request of the owner community, this reciprocal training model was created in 1995.

RECIPROCITY EXPLAINED:

Reciprocity refers to the mutual recognition and acceptance of BOP and its refresher among ARSC member organizations, and their member owners and contractors, eliminating redundant training and ensuring consistent quality across sites.



Why It Matters:

The average craftsperson works at various jobsites per year.

KEY ASPECTS OF RECIPROCITY

1 MUTUAL RECOGNITION OF TRAINING

Member organizations, and their members and owners, have agreed to recognize and accept each other's training programs since 1995.



2 EFFICIENCY AND COST SAVINGS

Workers do not have to retake identical training courses when they move to a new location or employer, resulting in substantial savings in labor hours and training expenses.



3 STANDARDIZATION AND QUALITY ASSURANCE

This is achieved through a standardized curriculum that complies with OSHA PSM requirements and regular third-party audits to maintain training quality.

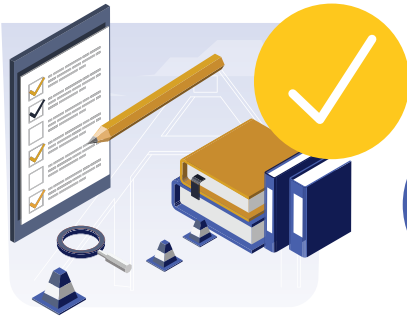


ARSC has determined that its BOP/BOP Refresher reciprocal training model provides **two added days of time on tools and training cost savings of a minimum of \$400 per craftsperson.**

Save Time and Money with Reciprocity

Options for training are good, but maintaining reciprocity is critical to quick availability and long-term sustainability of the workforce.

Your site's safety leader can reduce training redundancies by taking these three actions:



Add an “or” to your business rules if you accept training other than the BOP/BOP Refresher.



Allowing workers to leverage the PSM training they already have reduces onboarding time and increases time on tools.

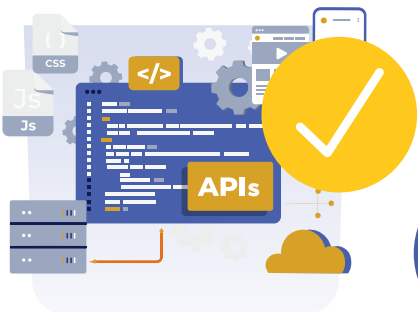


SITE ORIENTATION MADE AVAILABLE

Ensure your site’s orientation remains available through all safety councils that administer the BOP.



Providing access to your site’s orientation where workers live minimizes the cost of travel and per diem.



Ask your local safety council how you can make sure your training records are easily transferred between systems.



APIs (connectors between systems) ensure training records are available whenever and wherever needed.

ARSC is working to provide a remote delivery option for the BOP/BOP Refresher that meets its reciprocal training standards.



Reach out to your local safety council to learn more.



www.arsc.net